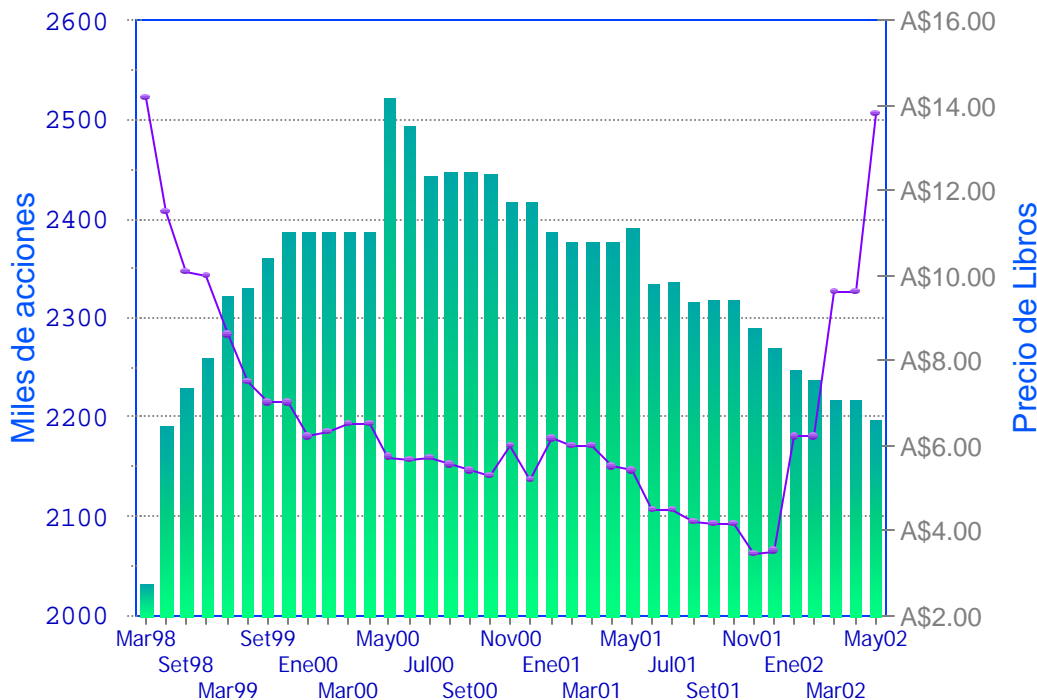


### Tenencias de los Fondos de Pensión (AFJPs)

Mayo-02



Fuente: SAFJP

■ SAMI Total Acciones — SAMI \$

[ABF.com.ar](http://ABF.com.ar)

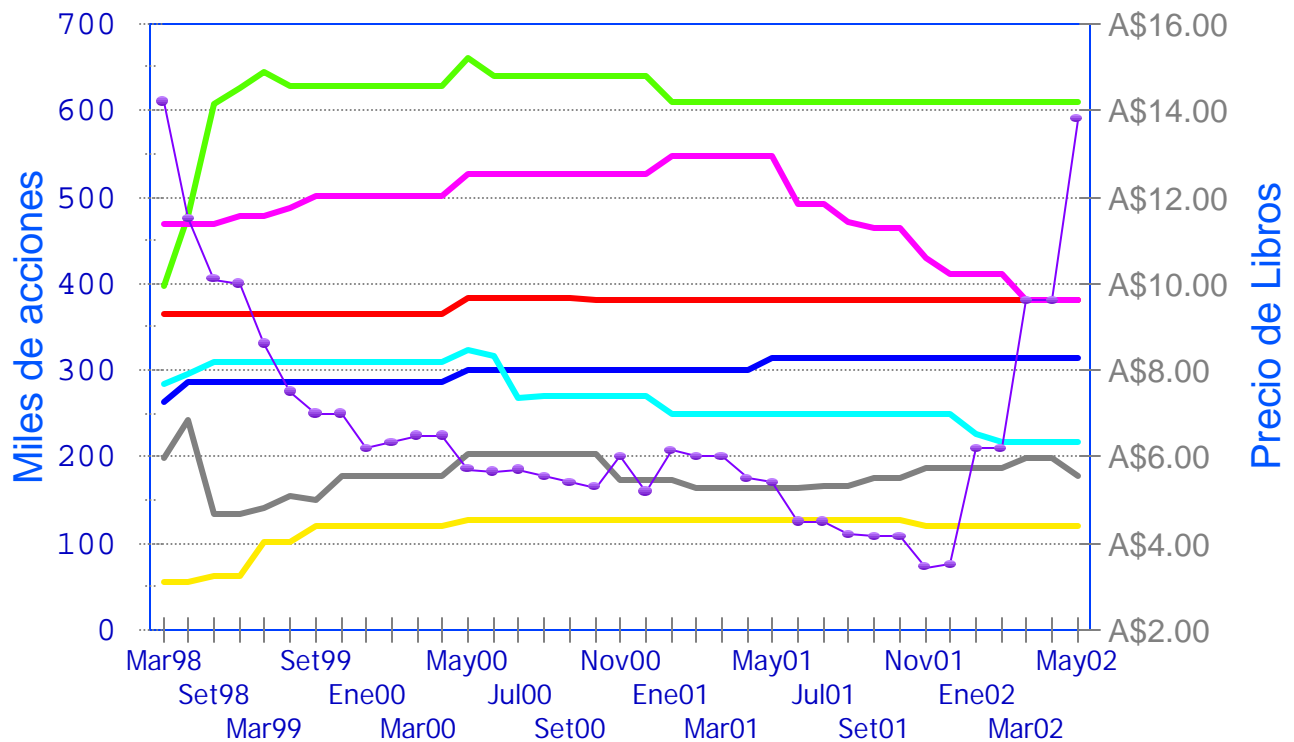
(Miles de acciones)

PERIODO	ARAU	CONS	MAXI	NACI	ORIG	SIEM	OTROS	Total	Valor
May02	119	313	381	216	609	381	177	2197	A\$13.800
MAX 98-02	127	313	383	324	660	547	243	2522	
Ahora/MAX	-5.8%	0.0%	-0.6%	-33.3%	-7.6%	-30.4%	-27.1%	-12.9%	
Min 24m	119	299	381	216	609	381	164	2197	
Ahora/Min	0.0%	4.6%	0.0%	0.0%	0.0%	0.0%	8.1%	0.0%	
Ahora/Dic01				-34		-30	-10	-74	
Ahora/Dic01	0.0%	0.0%	0.0%	-13.5%	0.0%	-7.2%	-5.5%	-3.2%	
Ahora/12m	-7			-34		-166	13	-194	
Ahora/12m	-5.8%	0.0%	0.0%	-13.5%	0.0%	-30.4%	8.1%	-8.1%	
Ahora/6m				-34		-50	-10	-94	
Ahora/6m	0.0%	0.0%	0.0%	-13.5%	0.0%	-11.6%	-5.5%	-4.1%	
Ahora/1m							-20	-20	
Ahora/1m							-10.3%	-0.9%	

Cartera en miles de acciones en todos los Fondos de Pensión desde Set'98 a la fecha indicada. Se indica el precio de valuación al fin del mes en pesos. Los Fondos pueden haber recibido dividendos en efectivo o en acciones por las tenencias, las que no aumentan la posición o precios anteriores. Para 1998 a 2000 el informe es trimestral, y luego mensual.

## Total de la Cartera por Fondo (AFJP)

Mayo-02



Fuente: SAFJP

— ARAU    — CONS    — MAXI    — NACI  
— ORIG    — SIEM    — OTROS    — SAMI \$

ABF.com.ar

Cartera en miles de acciones en los principales Fondos de Pensión desde Set'98 a la fecha indicada. Se indica el precio de valuación al fin del mes en pesos. Los Fondos pueden haber recibido dividendos en efectivo o en acciones por las tenencias, las que no aumentan la posición o precios anteriores. Cuando los Fondos se Fusionan, la posición se muestra el Fondo que incorpora la Cartera. Para 1998 a 2000 el informe es trimestral, y luego mensual.

## Total de acciones en los principales Fondos

(Miles de acciones)

Mayo-02

FECHA	ARAU	CONS	MAXI	NACI	ORIG	SIEM	OTROS	TOTAL	Delta	Delta%
Mar98	55.53	263.27	364.98	284.77	396.01	467.78	198.28	2030.62		
Jun98	55.53	285.14	364.98	296.65	477.97	467.78	243.09	2191.14	160.53	7.9%
Set98	63.02	285.14	364.98	308.65	607.01	467.78	133.13	2229.70	38.56	1.8%
Dic98	63.02	285.14	364.98	308.65	626.13	477.78	133.54	2259.24	29.54	1.3%
Mar99	101.52	285.14	364.98	308.65	644.48	477.78	140.51	2323.07	63.83	2.8%
Jun99	101.52	285.14	364.98	308.65	628.48	486.58	154.51	2329.87	6.80	0.3%
Set99	120.52	285.14	364.98	308.65	628.48	501.58	151.16	2360.52	30.65	1.3%
Dic99	120.52	285.14	364.98	308.65	628.48	501.58	177.62	2386.97	26.45	1.1%
Ene00	120.52	285.14	364.98	308.65	628.48	501.58	177.62	2386.97	0.00	0.0%
Feb00	120.52	285.14	364.98	308.65	628.48	501.58	177.62	2386.97	0.00	0.0%
Mar00	120.52	285.14	364.98	308.65	628.48	501.58	177.62	2386.97	0.00	0.0%
Abr00	120.52	285.14	364.98	308.65	628.48	501.58	177.62	2386.97	0.00	0.0%
May00	126.51	299.31	383.12	323.99	659.71	526.50	202.44	2521.58	134.61	5.6%
Jun00	126.51	299.31	383.12	316.47	639.36	526.50	202.44	2493.71	-27.87	-1.1%
Jul00	126.51	299.31	383.12	266.47	639.36	526.50	202.44	2443.71	-50.00	-2.0%
Ago00	126.51	299.31	383.12	269.88	639.36	526.50	202.44	2447.12	3.42	0.1%
Set00	126.51	299.31	383.12	269.88	639.36	526.50	202.44	2447.12	0.00	0.0%
Oct00	126.51	299.31	380.87	269.88	639.36	526.50	202.44	2444.87	-2.25	-0.1%
Nov00	126.51	299.31	380.87	269.88	639.36	526.50	173.94	2416.37	-28.50	-1.2%
Dic00	126.51	299.31	380.87	269.88	639.36	526.50	173.94	2416.37	0.00	0.0%
Ene01	126.51	299.31	380.87	249.88	609.36	546.50	173.94	2386.37	-30.00	-1.2%
Feb01	126.51	299.31	380.87	249.88	609.36	546.50	163.94	2376.37	-10.00	-0.4%
Mar01	126.51	299.31	380.87	249.88	609.36	546.50	163.94	2376.37	-0.00	-0.0%
Abr01	126.51	299.31	380.87	249.88	609.36	546.50	163.94	2376.37	0.00	0.0%
May01	126.51	313.22	380.87	249.88	609.36	546.50	163.94	2390.29	13.91	0.6%
Jun01	126.51	313.22	380.87	249.88	609.36	490.63	163.94	2334.41	-55.87	-2.3%
Jul01	126.51	313.22	380.87	249.88	609.36	490.63	166.19	2336.66	2.25	0.1%
Ago01	126.51	313.22	380.87	249.88	609.36	470.63	166.19	2316.66	-20.00	-0.9%
Set01	126.51	313.22	380.87	249.88	609.36	463.63	175.39	2318.86	2.20	0.1%
Oct01	126.51	313.22	380.87	249.88	609.36	463.63	175.39	2318.86	0.00	0.0%
Nov01	119.21	313.22	380.87	249.88	609.36	430.36	187.49	2290.39	-28.47	-1.2%
Dic01	119.21	313.22	380.87	249.88	609.36	410.36	187.49	2270.39	-20.00	-0.9%
Ene02	119.21	313.22	380.87	226.18	609.36	410.36	187.49	2246.69	-23.70	-1.0%
Feb02	119.21	313.22	380.87	216.18	609.36	410.36	187.49	2236.69	-10.00	-0.4%
Mar02	119.21	313.22	380.87	216.18	609.36	380.62	197.49	2216.95	-19.74	-0.9%
Abr02	119.21	313.22	380.87	216.18	609.36	380.62	197.49	2216.95	0.00	0.0%
May02	119.21	313.22	380.87	216.18	609.36	380.62	177.16	2196.62	-20.33	-0.9%

## Cambios por Fondo de Pensión

(Miles de acciones)

Mayo-02

FECHA	ARAU	CONS	MAXI	NACI	ORIG	SIEM	OTROS	TOTAL	Delta%
Jun98		21.87		11.88	81.96		44.81	160.53	7.9%
Set98	7.49			12.00	129.04		-109.97	38.56	1.8%
Dic98					19.13	10.00	0.41	29.54	1.3%
Mar99	38.50				18.35		6.98	63.83	2.8%
Jun99					-16.00	8.80	14.00	6.80	0.3%
Set99	19.00					15.00	-3.35	30.65	1.3%
Dic99							26.46	26.46	1.1%
Ene00								0.00	0.0%
Feb00								0.00	0.0%
Mar00								0.00	0.0%
Abr00								0.00	0.0%
May00	5.99	14.17	18.14	15.34	31.23	24.92	24.82	134.61	5.6%
Jun00			0.00	-7.52	-20.35			-27.87	-1.1%
Jul00				-50.00				-50.00	-2.0%
Ago00				3.42				3.42	0.1%
Set00								0.00	0.0%
Oct00			-2.25					-2.25	-0.1%
Nov00							-28.50	-28.50	-1.2%
Dic00								0.00	0.0%
Ene01				-20.00	-30.00	20.00		-30.00	-1.2%
Feb01						-0.00	-10.00	-10.00	-0.4%
Mar01	-0.00		-0.00	-0.00	-0.00		-0.00	-0.00	-0.0%
Abr01	0.00		0.00	0.00	0.00		0.00	0.00	0.0%
May01		13.91						13.91	0.6%
Jun01						-55.87		-55.87	-2.3%
Jul01							2.25	2.25	0.1%
Ago01						-20.00		-20.00	-0.9%
Set01						-7.00	9.20	2.20	0.1%
Oct01								0.00	0.0%
Nov01	-7.30					-33.27	12.10	-28.47	-1.2%
Dic01						-20.00		-20.00	-0.9%
Ene02				-23.70				-23.70	-1.0%
Feb02				-10.00				-10.00	-0.4%
Mar02						-29.74	10.00	-19.74	-0.9%
Abr02								0.00	0.0%
May02							-20.33	-20.33	-0.9%

# San Miguel

# SAMI

## Cambio porcentual de tenencias

Mayo-02

FECHA	ARAU	CONS	MAXI	NACI	ORIG	SIEM	OTROS	TOTAL
Jun98		8.3%		4.2%	20.7%		22.6%	7.9%
Set98	13.5%			4.0%	27.0%		-45.2%	1.8%
Dic98					3.2%	2.1%	0.3%	1.3%
Mar99	61.1%				2.9%		5.2%	2.8%
Jun99					-2.5%	1.8%	10.0%	0.3%
Set99	18.7%					3.1%	-2.2%	1.3%
Dic99							17.5%	1.1%
Ene00								
Feb00								
Mar00								
Abr00								
May00	5.0%	5.0%	5.0%	5.0%	5.0%	5.0%	14.0%	5.6%
Jun00			0.0%	-2.3%	-3.1%			-1.1%
Jul00				-15.8%				-2.0%
Ago00				1.3%				0.1%
Set00								
Oct00			-0.6%					-0.1%
Nov00							-14.1%	-1.2%
Dic00								
Ene01				-7.4%	-4.7%	3.8%		-1.2%
Feb01						-0.0%	-5.7%	-0.4%
Mar01	-0.0%		-0.0%	-0.0%	-0.0%		-0.0%	-0.0%
Abr01	0.0%		0.0%	0.0%	0.0%		0.0%	0.0%
May01		4.6%						0.6%
Jun01						-10.2%		-2.3%
Jul01							1.4%	0.1%
Ago01						-4.1%		-0.9%
Set01						-1.5%	5.5%	0.1%
Oct01								
Nov01	-5.8%					-7.2%	6.9%	-1.2%
Dic01						-4.6%		-0.9%
Ene02				-9.5%				-1.0%
Feb02				-4.4%				-0.4%
Mar02						-7.2%	5.3%	-0.9%
Abr02								
May02							-10.3%	-0.9%