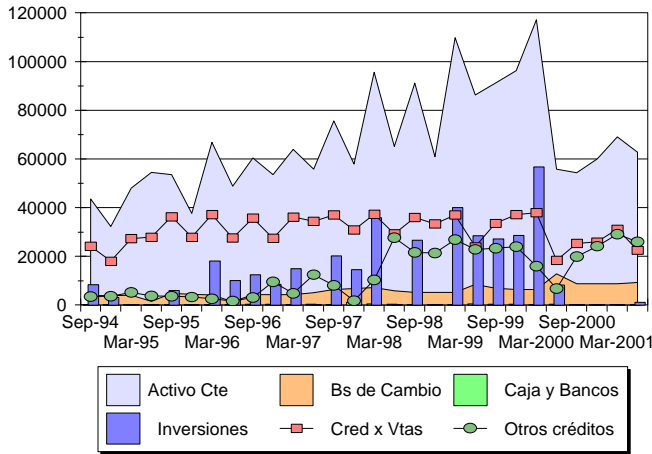
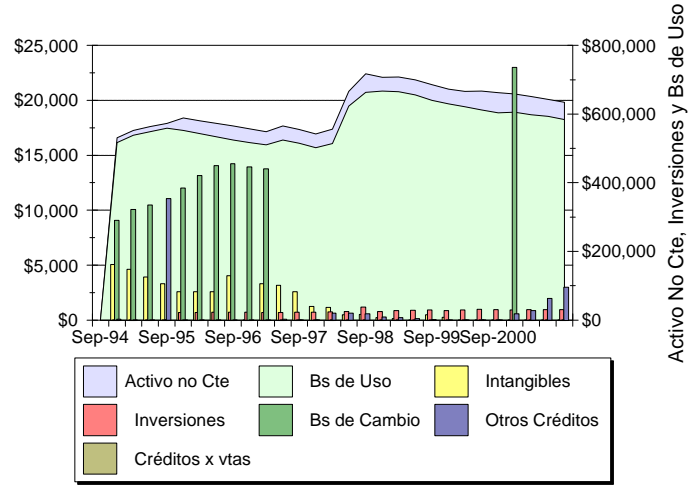


Central Costanera

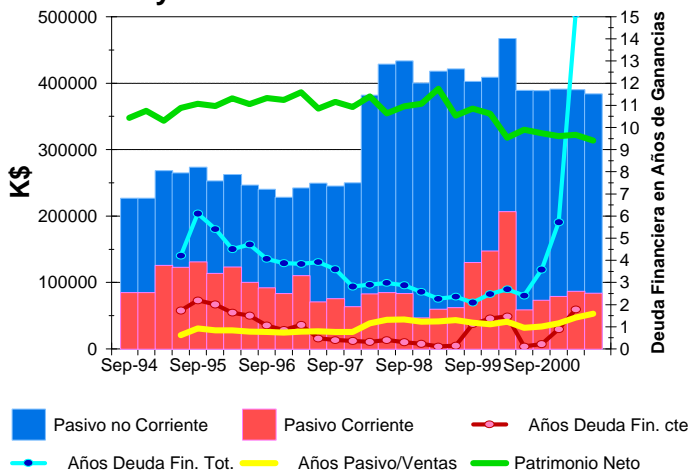
Activos Corrientes



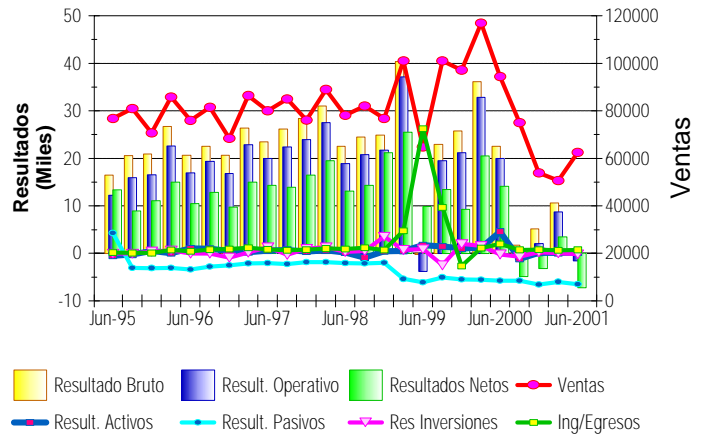
Activos No Corrientes



Patrimonio y Pasivo

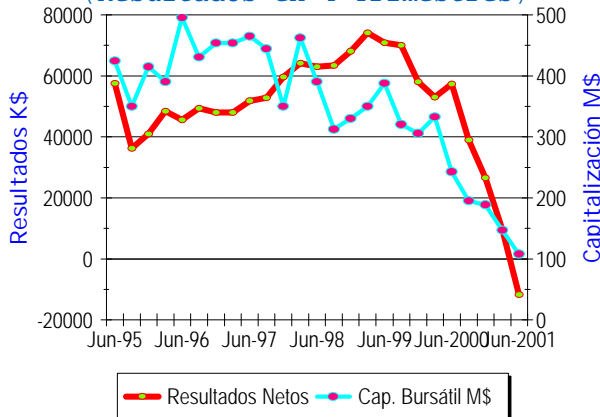


Resultados por Trimestre



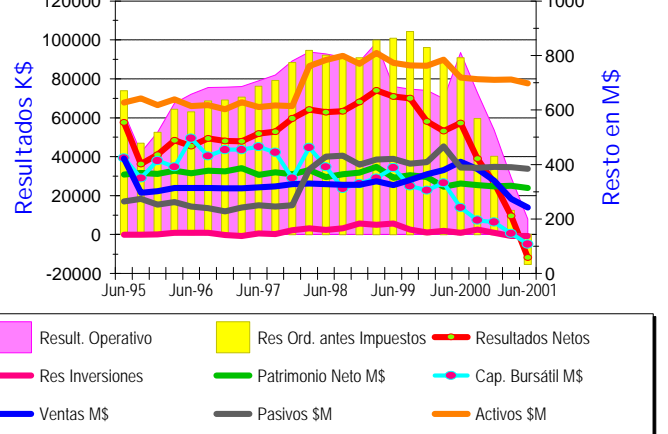
Evolución Bursátil

(Resultados en 4 Trimestres)



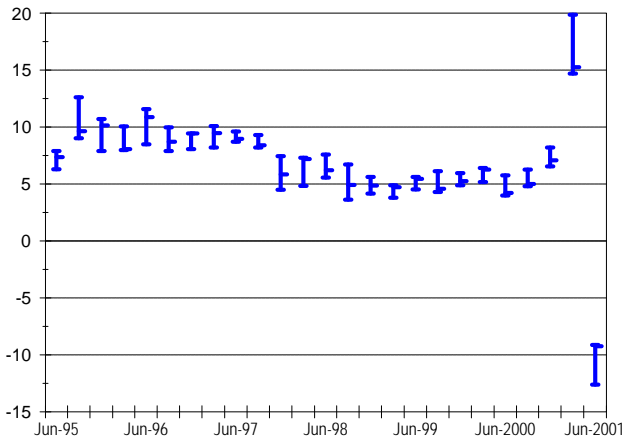
Gestión Empresarial

(Resultados y Ventas en 4 Trimestres)

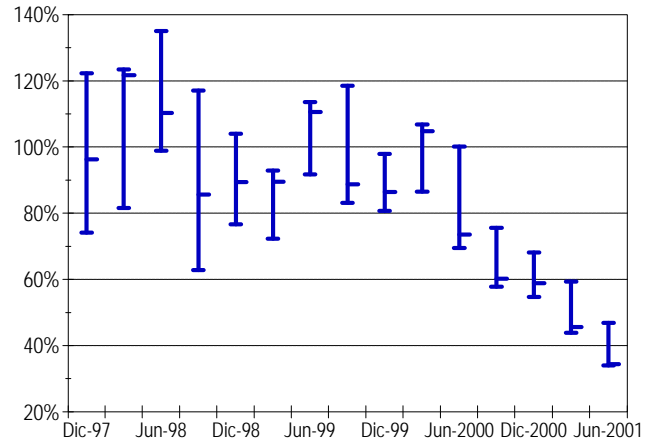


Central Costanera

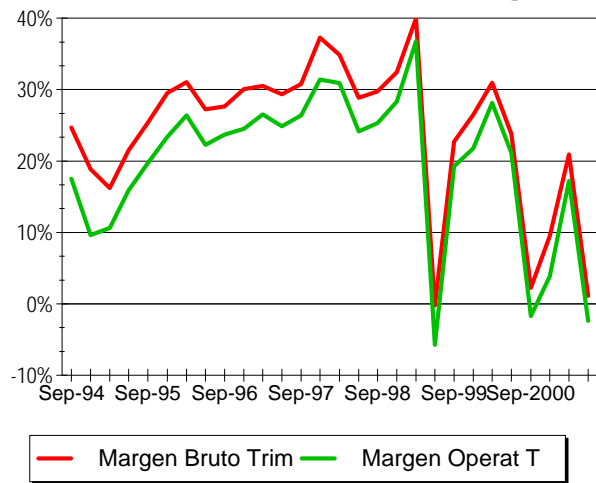
Relación Precio Acción/Ganancias (PER)
(Resultados en 4 Trimestres)



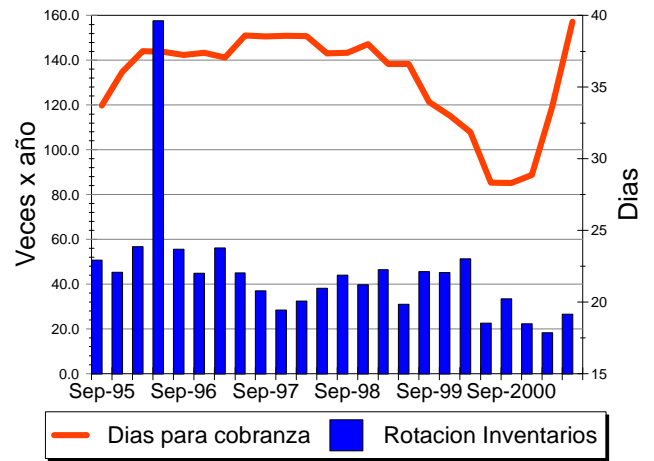
Precio Acción/Valor de Libros (PM/VL)



Márgenes



Rotación Inventarios y Días Cobranza



Costos Explotación y Ventas

